



# **Manual for Simple Show Control Software**

Manual version: V1.2

Prepared by: Mendel Lin

Updated Date: Jan 16 2012

Email: [Mendel@SmartHomeGroup.com](mailto:Mendel@SmartHomeGroup.com)

## 1. Installation

- 1.1 Before run Simple Show Control software, you must upgrade your windows media player to version 11 or above, if have already upgrade it before ,you can pass by this step.

☆ If you can not upgrade windows media player to version 11, please read below.

- a. Download windows media player (WMP) 11 from internet
- b. **Don't setup the WMP directly, uncompress the WMP 11.**
- c. You will the see following 4 EXE files after you uncompress

umdf.exe

wmdbexport.exe

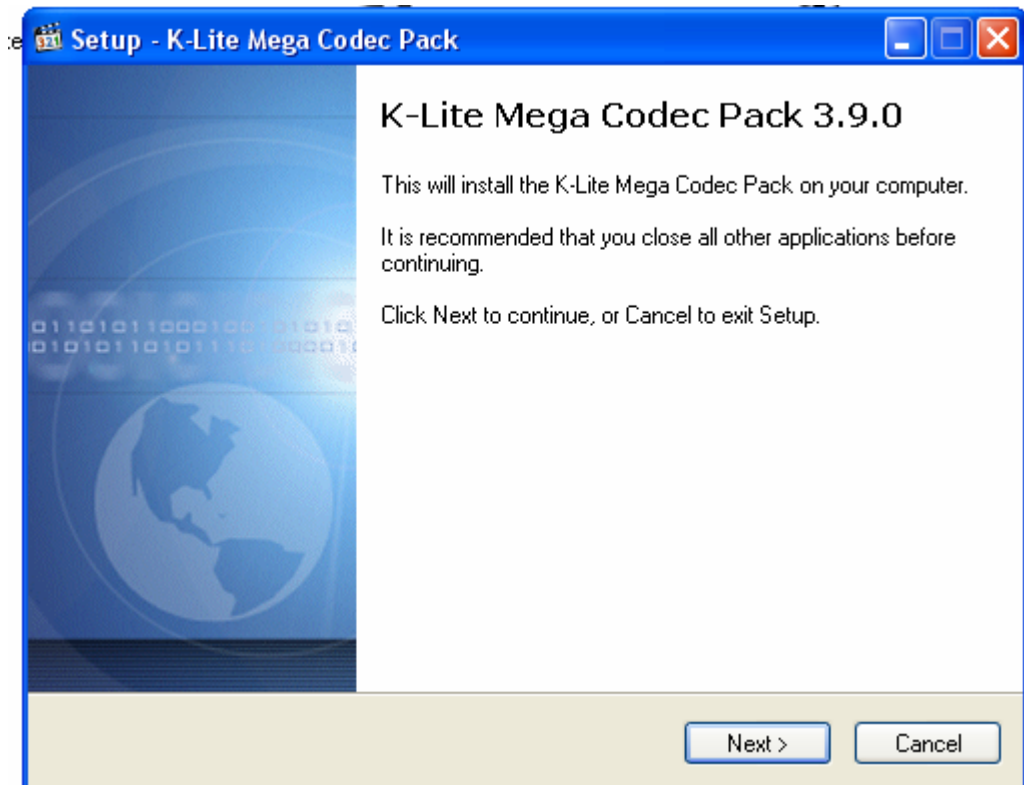
wmfdist11.exe

wmp11.exe

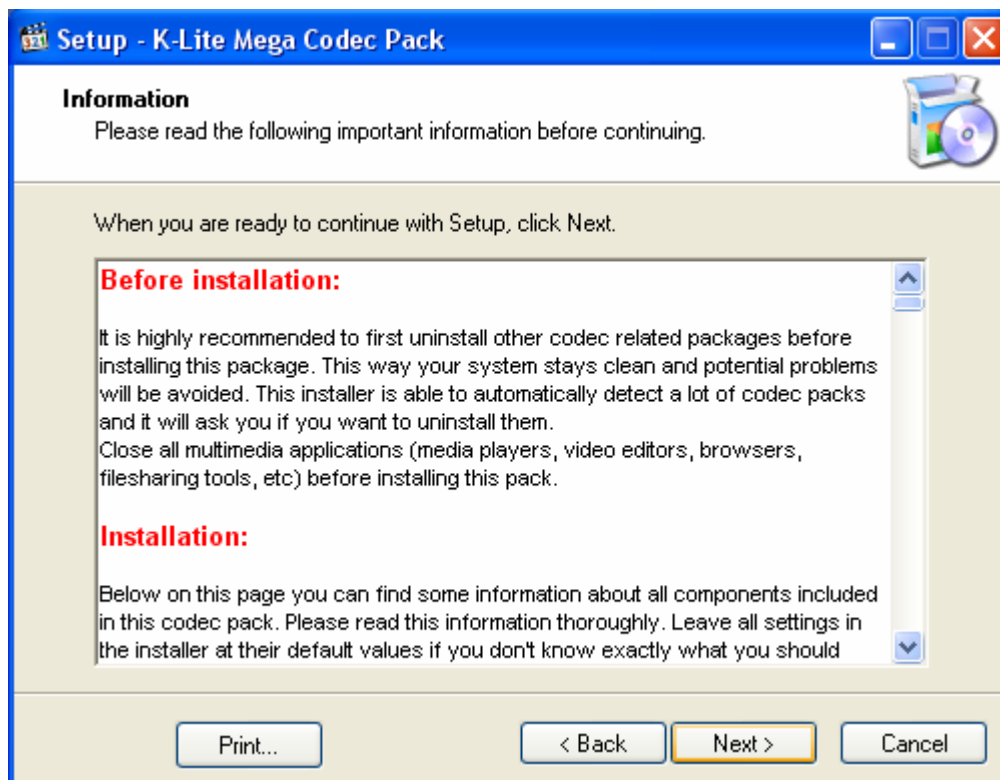
You need install them in order,  
First Install umdf.exe  
second install wmbdexport.exe  
Third install wmfdist11.exe  
Fourth install wmp11.exe

*Run the windows media player when you finished installation.*

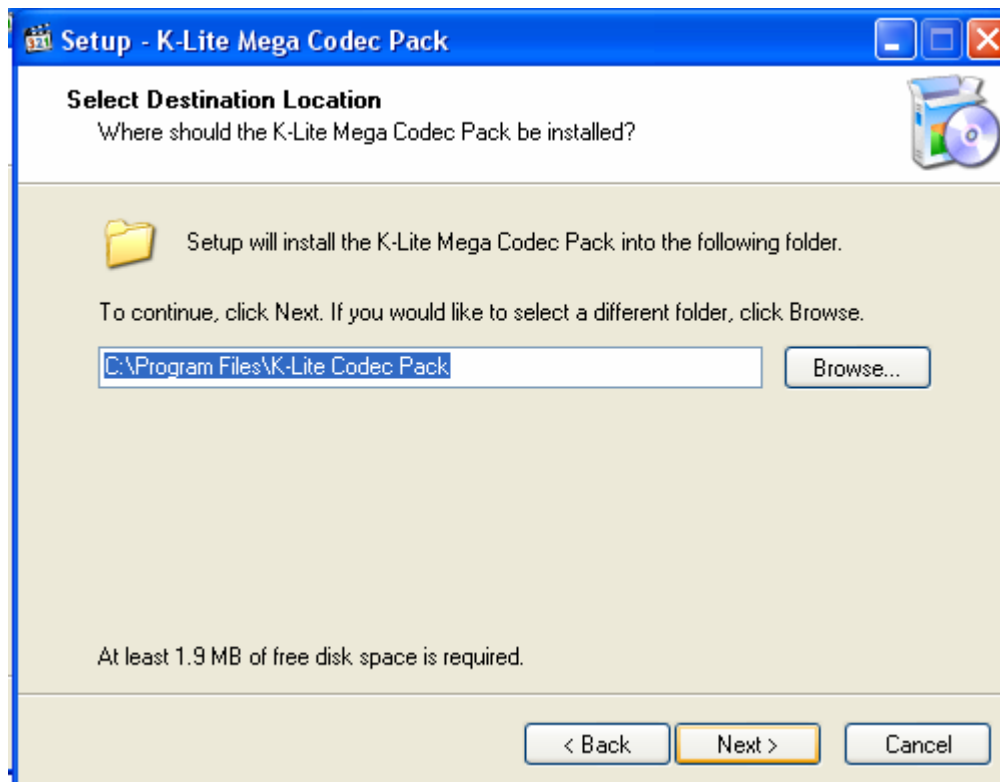
### 1.2 Install codec “klmcodec390.exe” for windows media player



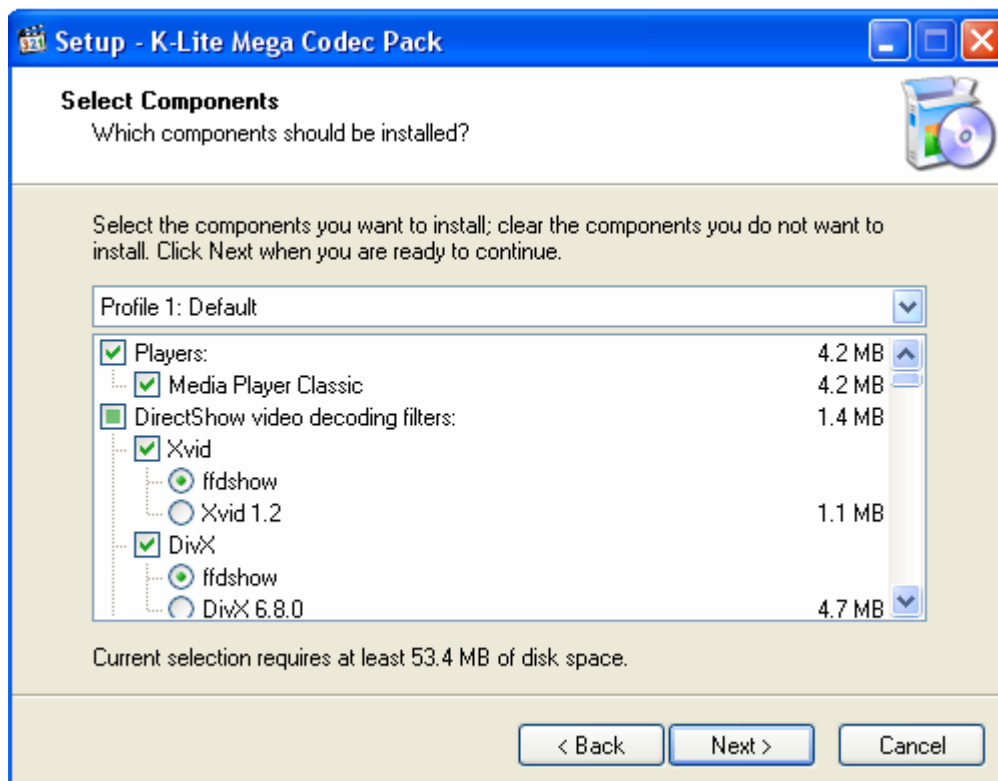
Click "Next"



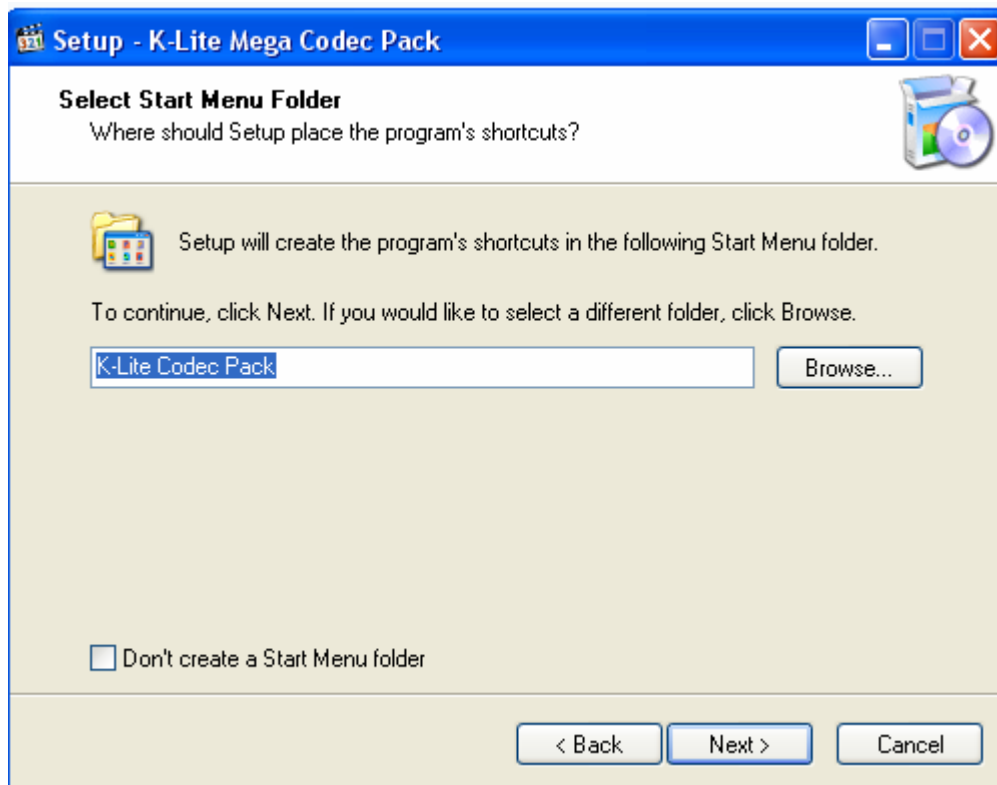
Click Next



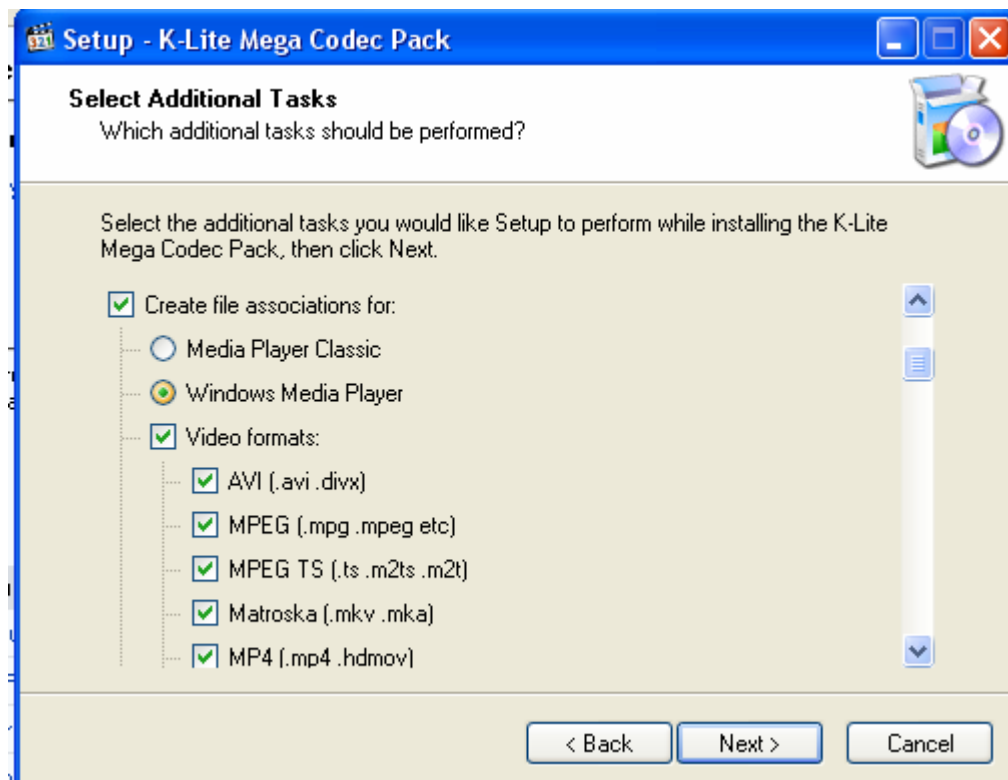
Click Next, Choose Profile 1:Default



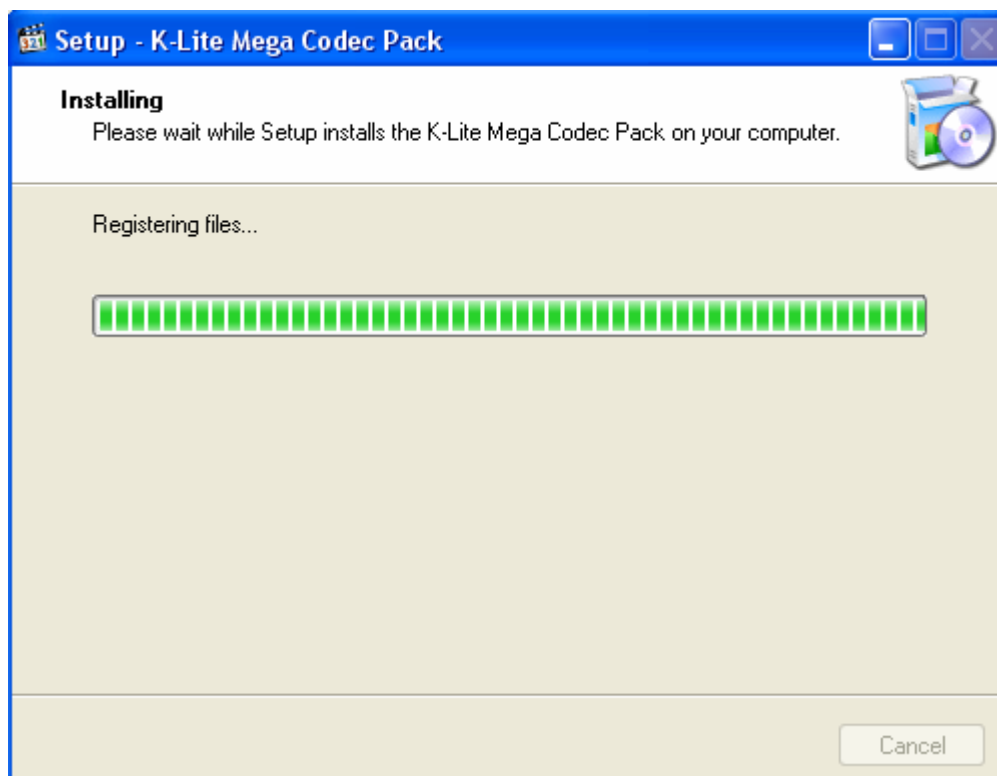
Click Next



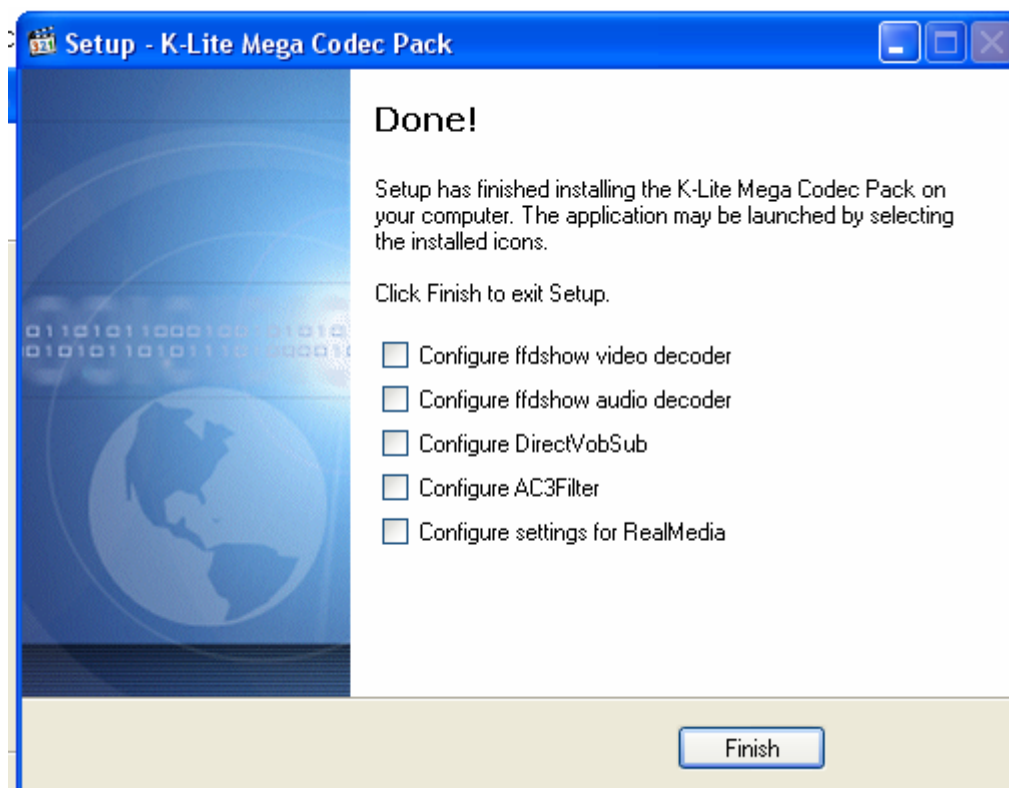
Click Next, **you must select windows media player,** and check all the format of video



Click Next



Done



1.3 Just copy the folder "Simple Show Control" to your computer

We recommended that you save the folder to driver D/E/F except driver C if you have more than 1 drive on your computer

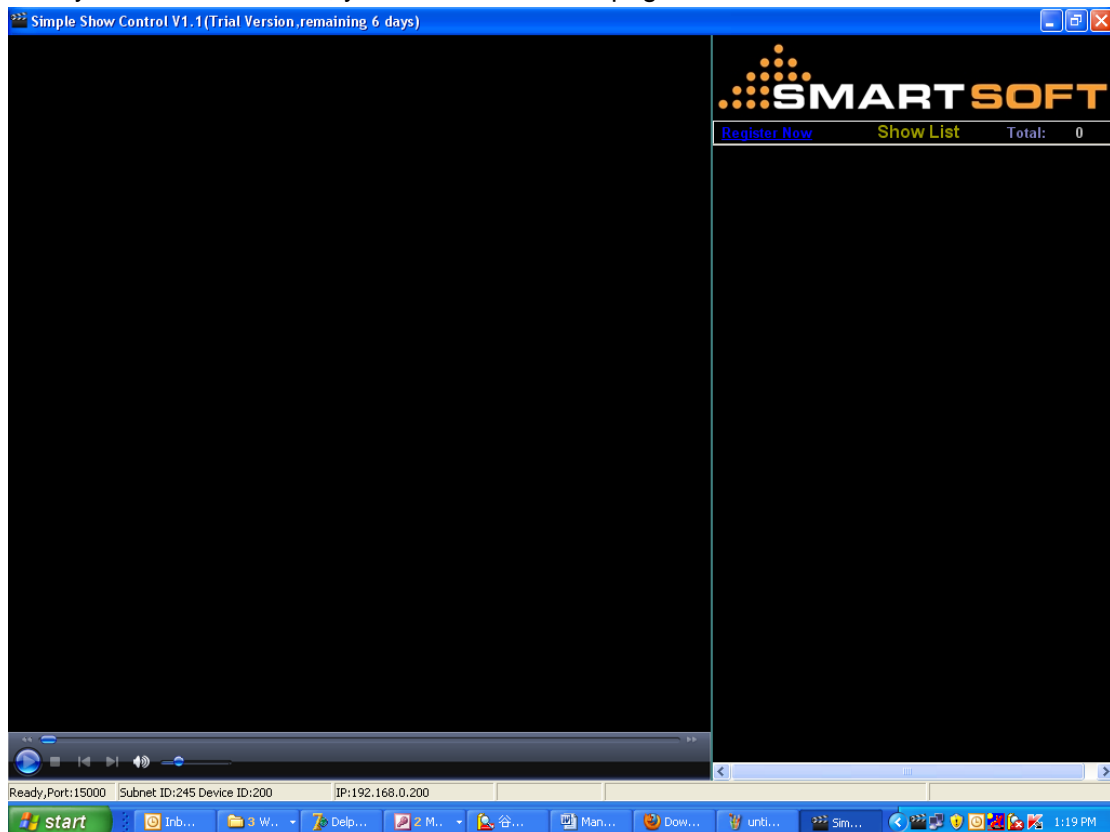
**1.4 Please note that all the configuration data are saved under folder “Database”, if you want to backup the data, you can just backup this folder.**

## 2. Trial version for 7 days and Register

Just click the software icon



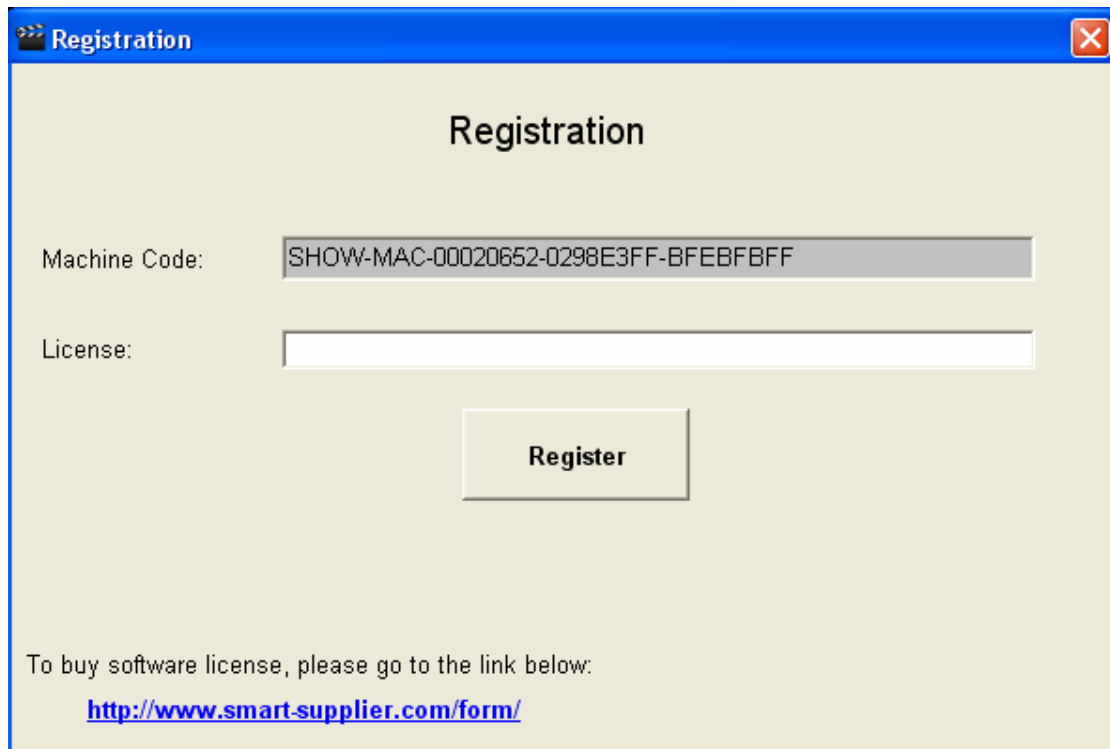
After you run the software, you will see the main page and the icon on the taskbar.



### Register Software

Click Register Now



A screenshot of a software registration window titled "Registration". The window has a blue title bar with a close button. The main area is light beige. At the top, the word "Registration" is centered. Below it, there are two input fields. The first is labeled "Machine Code:" and contains the text "SHOW-MAC-00020652-0298E3FF-BFEBFBFF". The second is labeled "License:" and is empty. Below these fields is a button labeled "Register". At the bottom, there is a line of text: "To buy software license, please go to the link below:" followed by a blue underlined link: <http://www.smart-supplier.com/form/>.

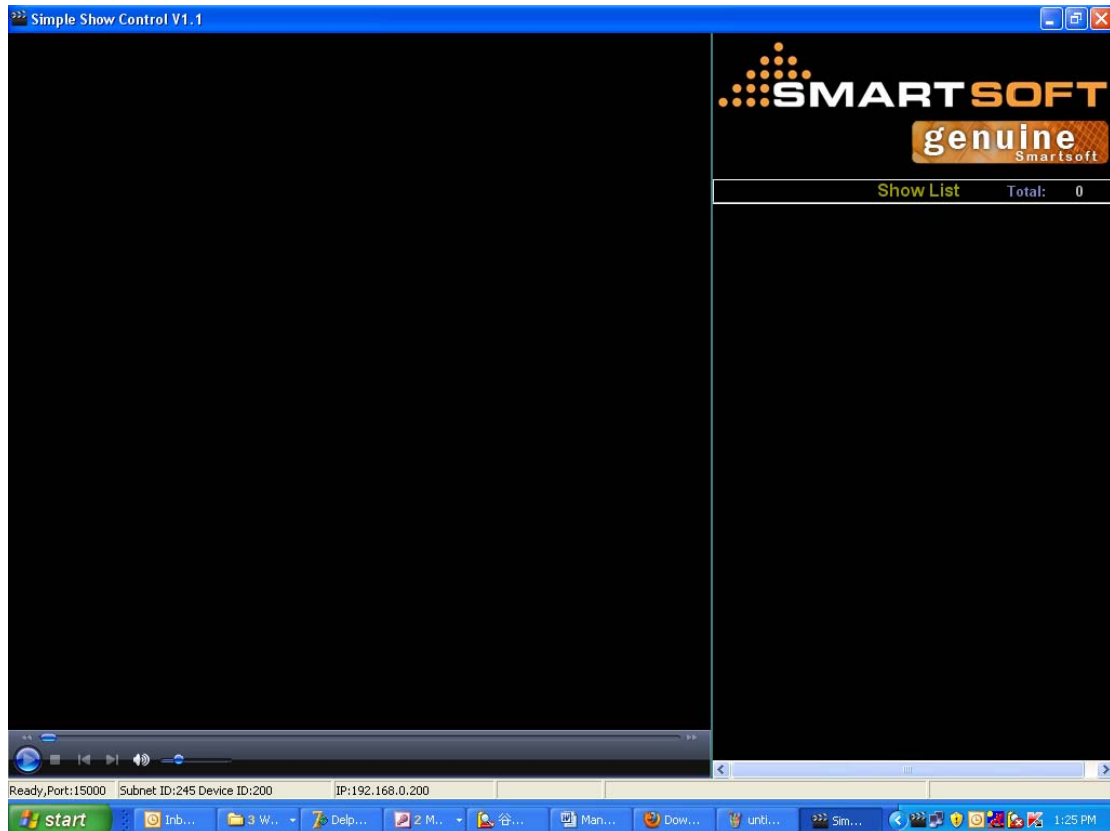
To buy software license, please go to the link below:

[www.smart-supplier.com/form](http://www.smart-supplier.com/form/)

After payment, you will be requested to send the machine code above to us by email, and we will release the license for you.

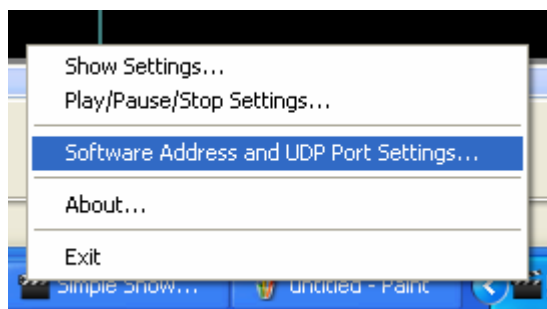
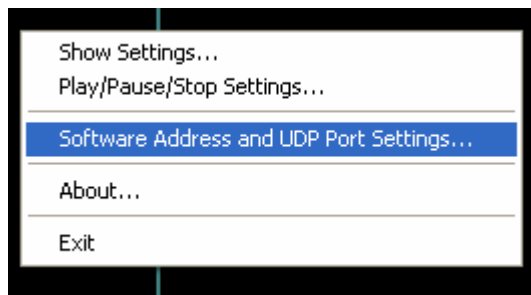
After you get the license from us, you just need put the license to text box above, then click Register button, if your license is correct, the software will go to the page below:

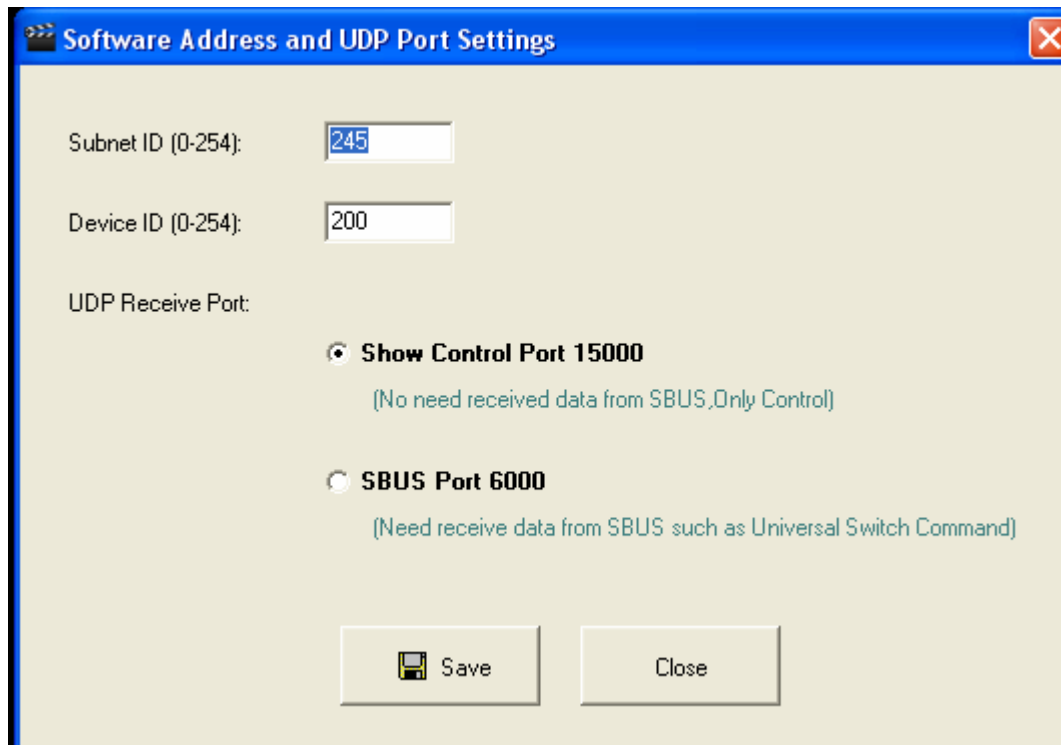




### 3. Settings for Software address and UDP Port

Right click the icon which is on the taskbar or Show List, you can go to settings pages or close the software.





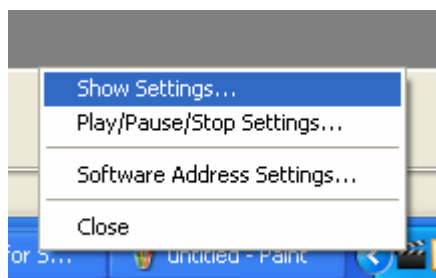
#### Option 1: Show Control Port 15000

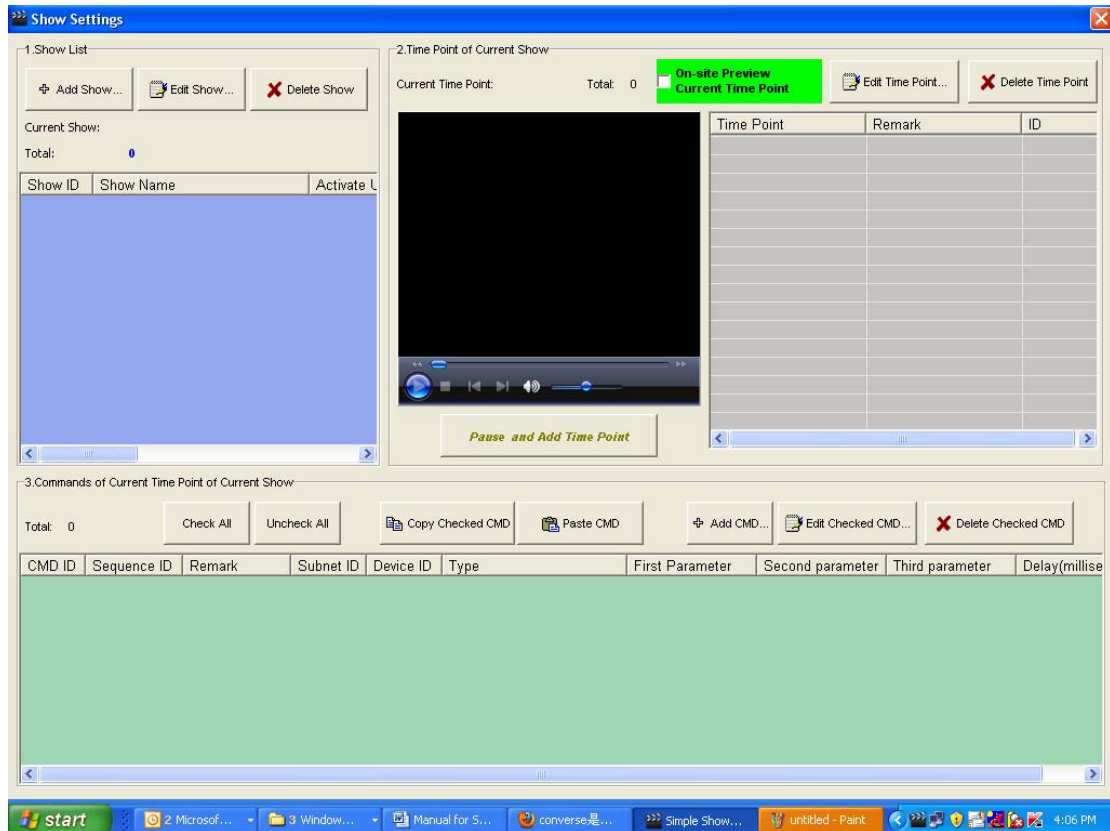
if do not need to control Simple Show Control by DLP/HAC software/Logic module and so on, you can choose UDP receive Port to option 1 “Show Control Port 15000”, The advantage of option 1 is that you can run Simple show Control software with S-BUS software together; there is no conflict with UDP Port, because they are using different UDP Port.

#### Option 2: SBUS Port 6000

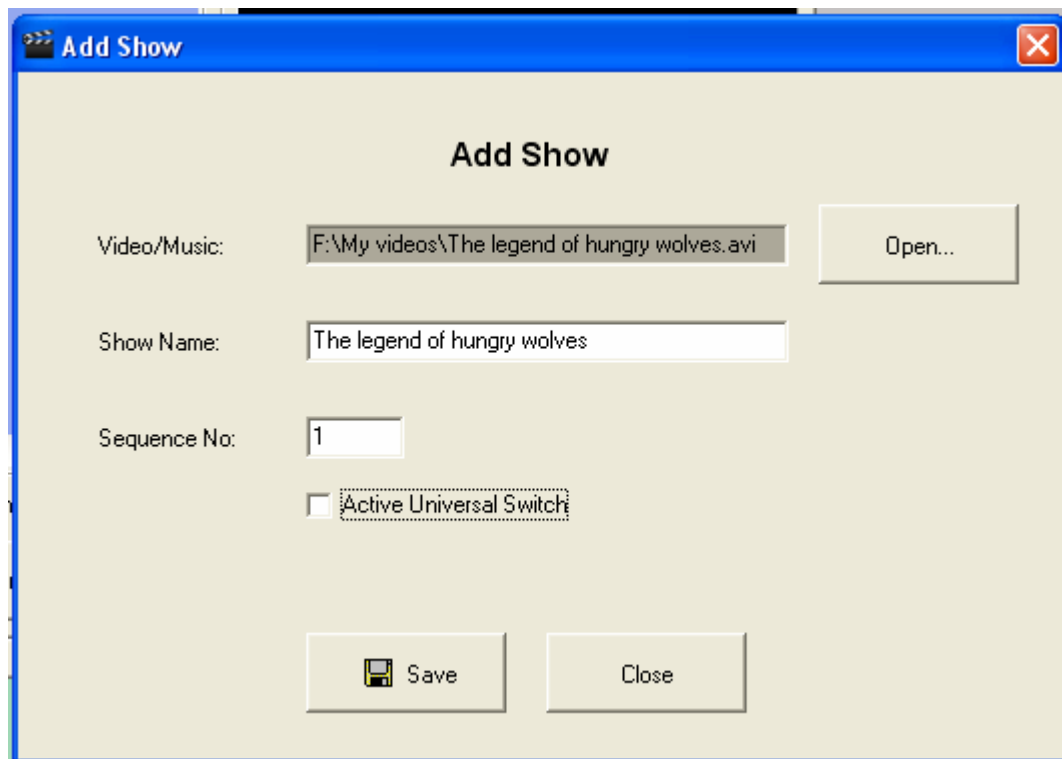
If you need to control Simple Show Control by DLP/HAC Software/Logic Module and so on, you must select SBUS port 6000, but you can not run Simple Show Control Software with SBUS software together at the same computer.

## 4. Settings for the Show





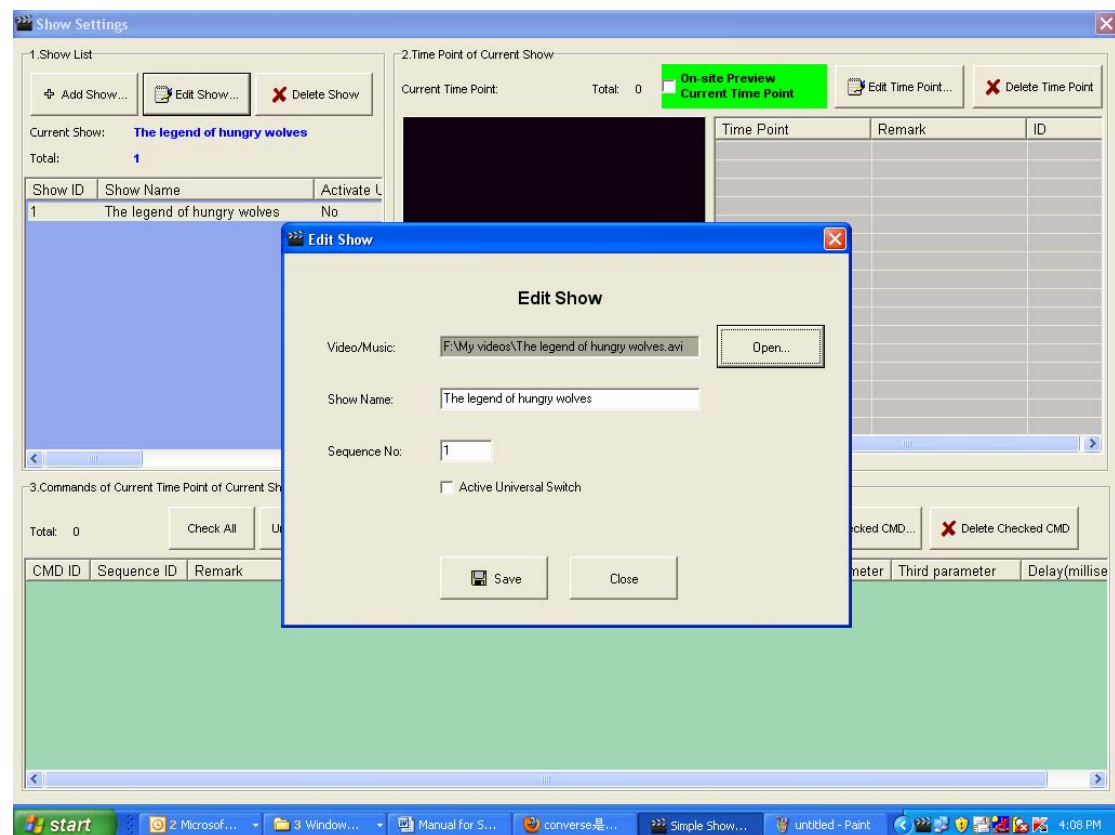
## Add Show



If you need Simple Show Control software to be controlled by HAC/DLP and so on, not only you need choose UDP port 6000, but also you need active Universal Switch and assign

universal switch ID for the show.

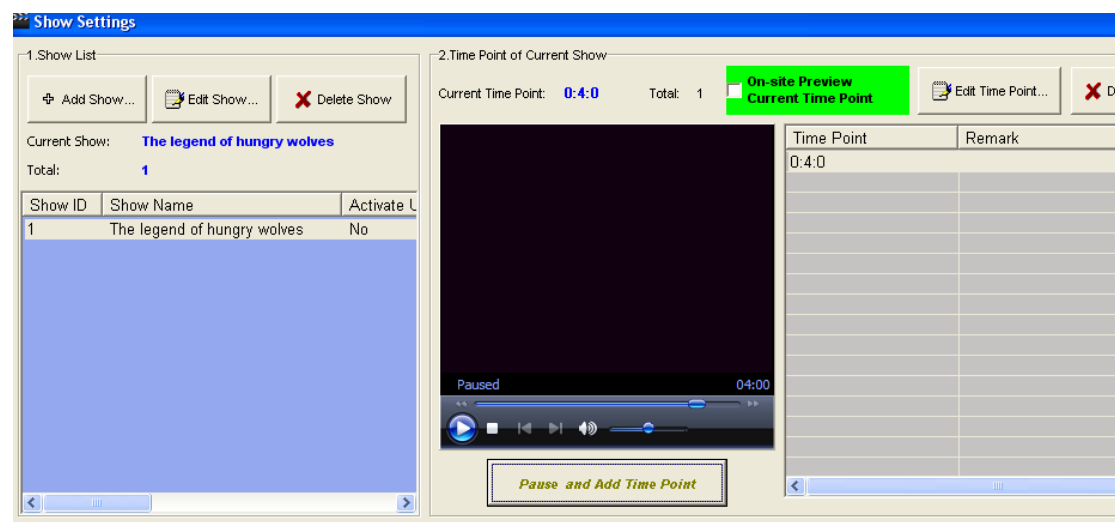
## Edit Show



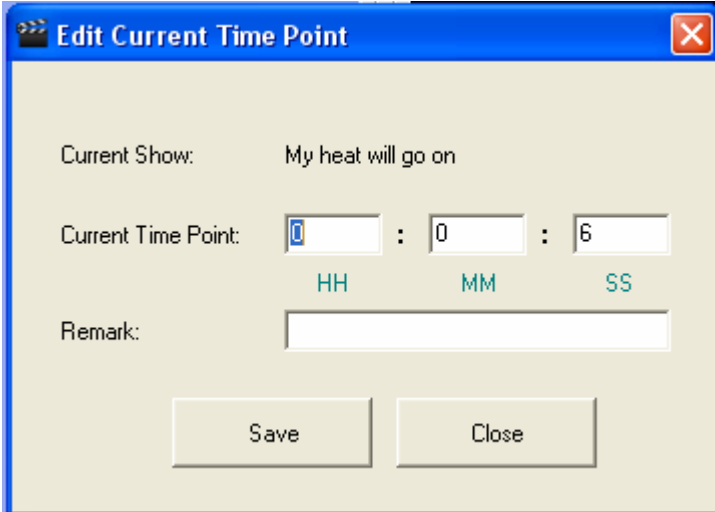
## 5. Settings for time point of the Show

### Add new time point:

when you play the video, just click the button “Pause and Add Time Point” to add new time point you want, The software will automatically get the current playing time of video which you are watching.



### Edit time point:

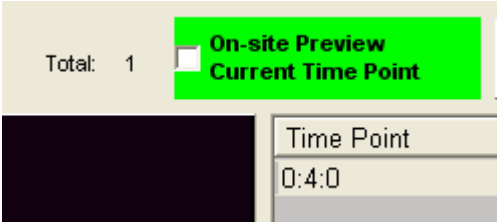


The dialog box titled "Edit Current Time Point" has a blue title bar with a close button. It contains the following fields and controls:

- Current Show:** A text field containing "My heat will go on".
- Current Time Point:** Three input fields for HH, MM, and SS. The values are 0, 0, and 6 respectively. Below each field is a label: "HH", "MM", and "SS".
- Remark:** A text area for additional notes.
- Buttons:** "Save" and "Close" buttons at the bottom.

### On-site Preview Current Time Point

Check the checkbox below to preview the programming of current time point you made.



This section shows a preview of the current time point programming. It includes a checkbox labeled "On-site Preview Current Time Point" and a table showing the time point.

Time Point
0:4:0

## 6. Settings for commands of current time point of current

### Show

#### Add new commands

Select the show, and select the time point, and then you can add the commands

Add Commands

Add Commands

Current Show:

My heat will go on

Current Time Point:

0:0:6

How many commands do you want to add?

3

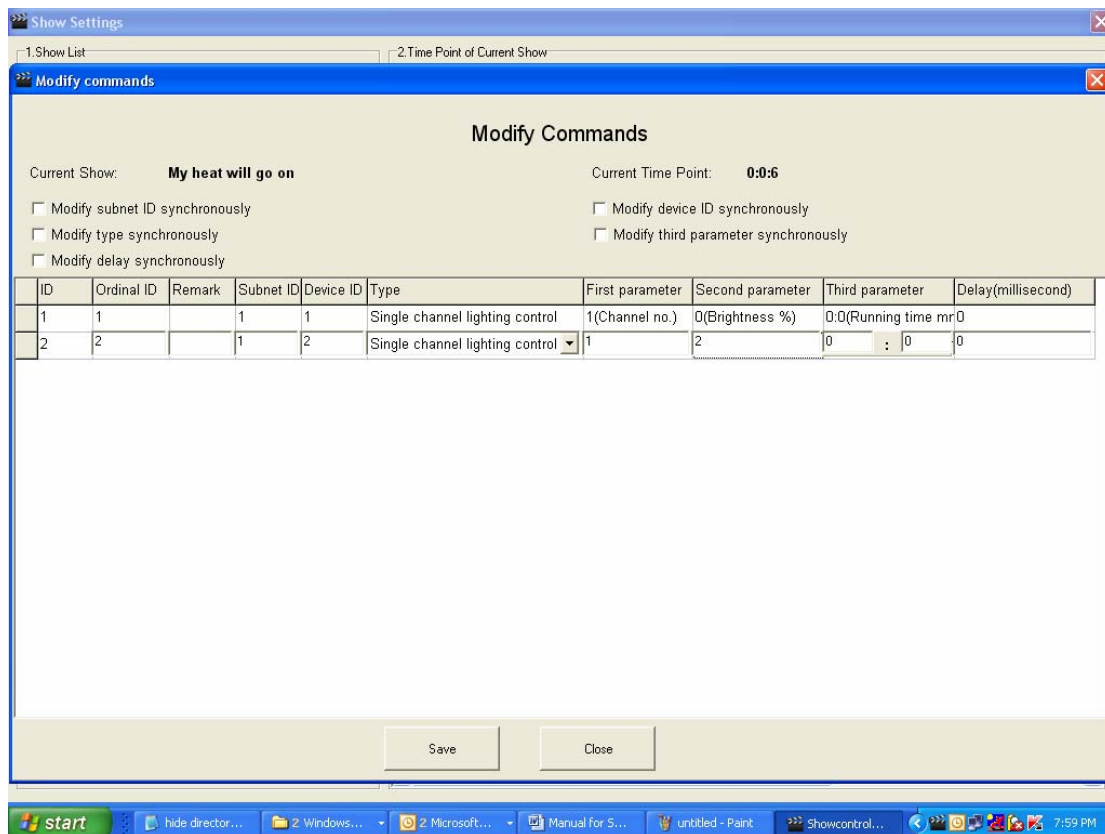
Add

Close

### Edit the commands

Click the button "Modify checked"

3.Commands of Current Time Point of Current Show									
Total: 1		Check All	Uncheck All	Copy Checked CMD	Paste CMD	Add CMD...	Edit Checked CMD...	Delete Checked	
CMD ID	Sequence ID	Remark	Subnet ID	Device ID	Type	First Parameter	Second parameter	Third parameter	D
<input checked="" type="checkbox"/> 1	1		0	0	Invalid	0	0	N/A	0



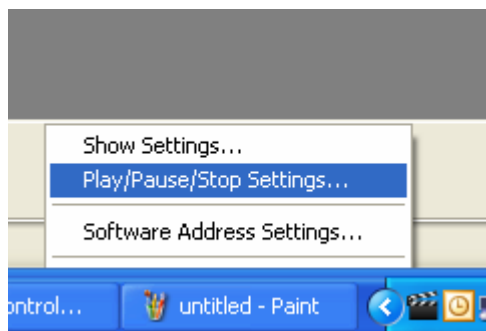
## 7. Settings for Play/Pause/Stop actions

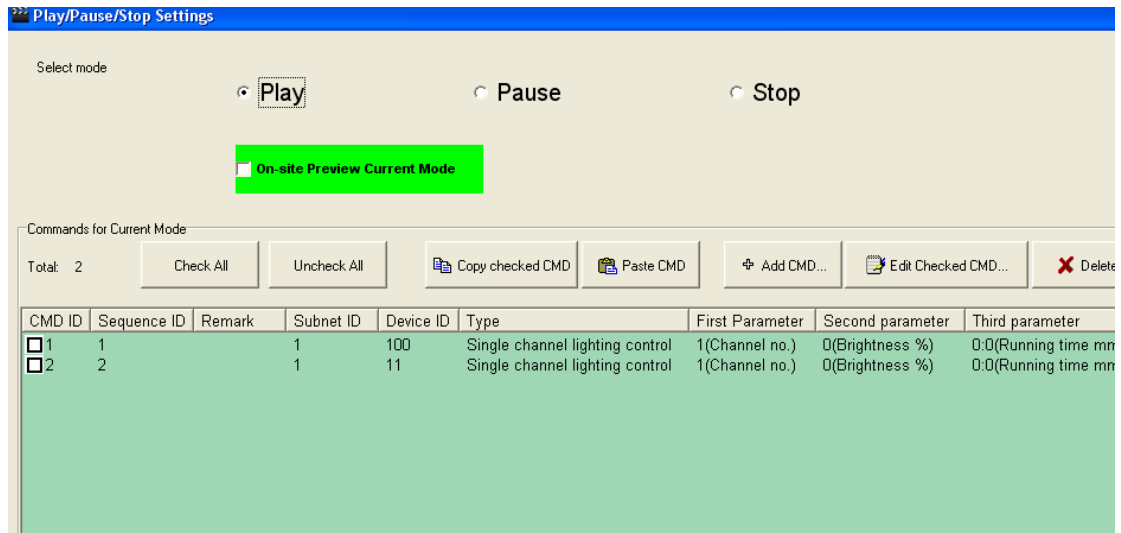
you can make the programming for following functions:

Turn off all the lights when it's playing video

Turn on some of lights when pause video

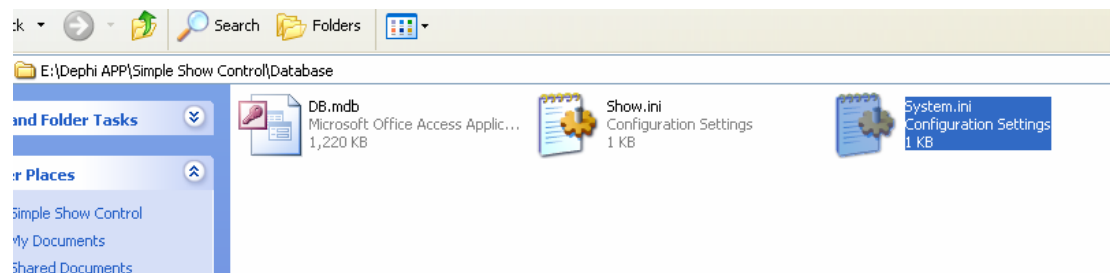
Turn on all lights when stop the video





## 8. Generation Settings

the location is \Database\System.ini



Open the file System.ini

[Generation]

GenerationNo=4

If you are using Smart-BUS G4 gateway such as G4 RS232IP, then you need set **GenerationNo=4**

If you are using Smart-BUS G3 gateway such as G3 RS232IP or 1Port, then you need set **GenerationNo=3**

If have any question or suggestion, please contact me, Thanks.

**Mendel@SmartHomeGroup.com**